

- 4 x Type J, K, T, E, R, S or N thermocouple inputs and 2 x 3-wire Pt100 inputs
- Display and log all 6 channels simultaneously or individually
- Scheduled and manual logging start/stop
- SD Card stores up to 1 year of data
- Display max, min, average and standard deviation
- Display temperature difference between any two channels
- Battery or mains powered (with included adapter)
- Touch screen with backlight
- 2-channel temperature chart
- Alarm indication for each channel
- CE Marked and RoHS Compliant



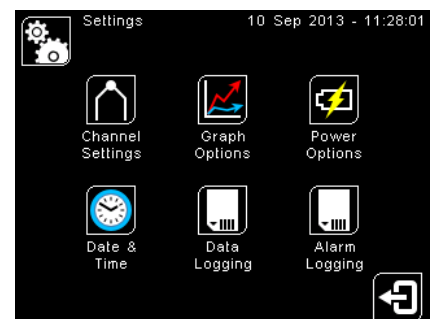
6 Channel Handheld Temperature Data Logger with Touch Screen

## GENERAL SPECIFICATIONS

**Inputs** 4 x thermocouple inputs (any of the below types), for use with miniature thermocouple connectors, and 2 x 3-wire Pt100 inputs, for use with 3-pole stereo TRS 3.5 mm connectors

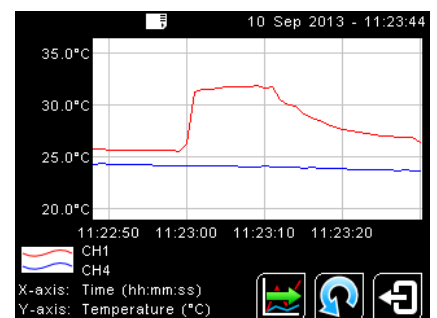
Input Type	Temperature Range	Accuracy of VersaLog only (whichever is greater)
Type J	-200°C to 1200°C	± 0.1% or 0.8°C
Type K	-200°C to 1372°C	± 0.1% or 0.8°C
Type T	-200°C to 400°C	± 0.1% or 0.8°C
Type R	0°C to 1768°C	± 0.1% or 0.8°C
Type S	0°C to 1768°C	± 0.1% or 0.8°C
Type N	0°C to 1300°C	± 0.1% or 0.8°C
Type E	-200°C to 1000°C	± 0.1% or 0.8°C
Pt100 (3-wire)	-200°C to 850°C	± 1.0% or 1.0°C

<b>Temperature Resolution</b>	0.1° for temperatures below 1000° (C or F) 1° for temperatures above 1000° (C or F)
<b>Display</b>	2.83" (72 mm) resistive touch TFT, 320 x 240 pixels, backlight
<b>Configurable Parameters</b>	Temperature units, alarms, signal processing, date and time, data logging, power options, graph channels
<b>Temperature Units</b>	°F or °C
<b>Alarm Configuration</b>	12 x alarms (2 per channel) with adjustable level, individually configurable as HI or LO.
<b>Signal Processing</b>	Average, minimum, maximum, standard deviation, 2-channel temperature difference
<b>Display Response Time</b>	1 s
<b>Operating Temperature</b>	0 to 50°C
<b>Power Supply</b>	2 x NiMH rechargeable AA batteries >2000 mAh (not supplied), or 2 x alkaline AA batteries > 2000 mAh (not supplied), or 5 V DC adapter (included)
<b>Current Draw</b>	250 mA while logging with full display brightness 60 mA (typical) while logging in power saving mode
<b>Weight</b>	180 g without batteries
<b>Dimensions</b>	136(w) x 71(h) x 32(d) mm, without probes



### Intuitive touch screen interface

Fully configurable; no additional hardware is required for configuration. Each channel is configurable separately for input type, maths, alarms and display options



### Temperature Graph

Two selectable channels are displayed. Scroll back in time to view chart history.

## DATA LOGGING SPECIFICATIONS

<b>Data Logging Interval</b>	1 to 86,400 seconds (1 day)
<b>Max. SD Card Capacity</b>	32 GB SD or SDHC (4 GB SD Card included)
<b>Variables Logged</b>	Measured temperature, cold junction temperature, alarm events
<b>File Format</b>	.csv (can be imported to Excel)
<b>Configurable Parameters</b>	Sample period, number of samples, scheduled start date/time

### MODEL NUMBERS

VERSALOG 6-channel data logger with 4 GB SD Card, 5 V DC mains adapter and stand

### ACCESSORIES

VLMA	Spare mains adapter
VLSD	Spare 4 GB SD Card
VLALCERT	Calibration certificate, UKAS traceable